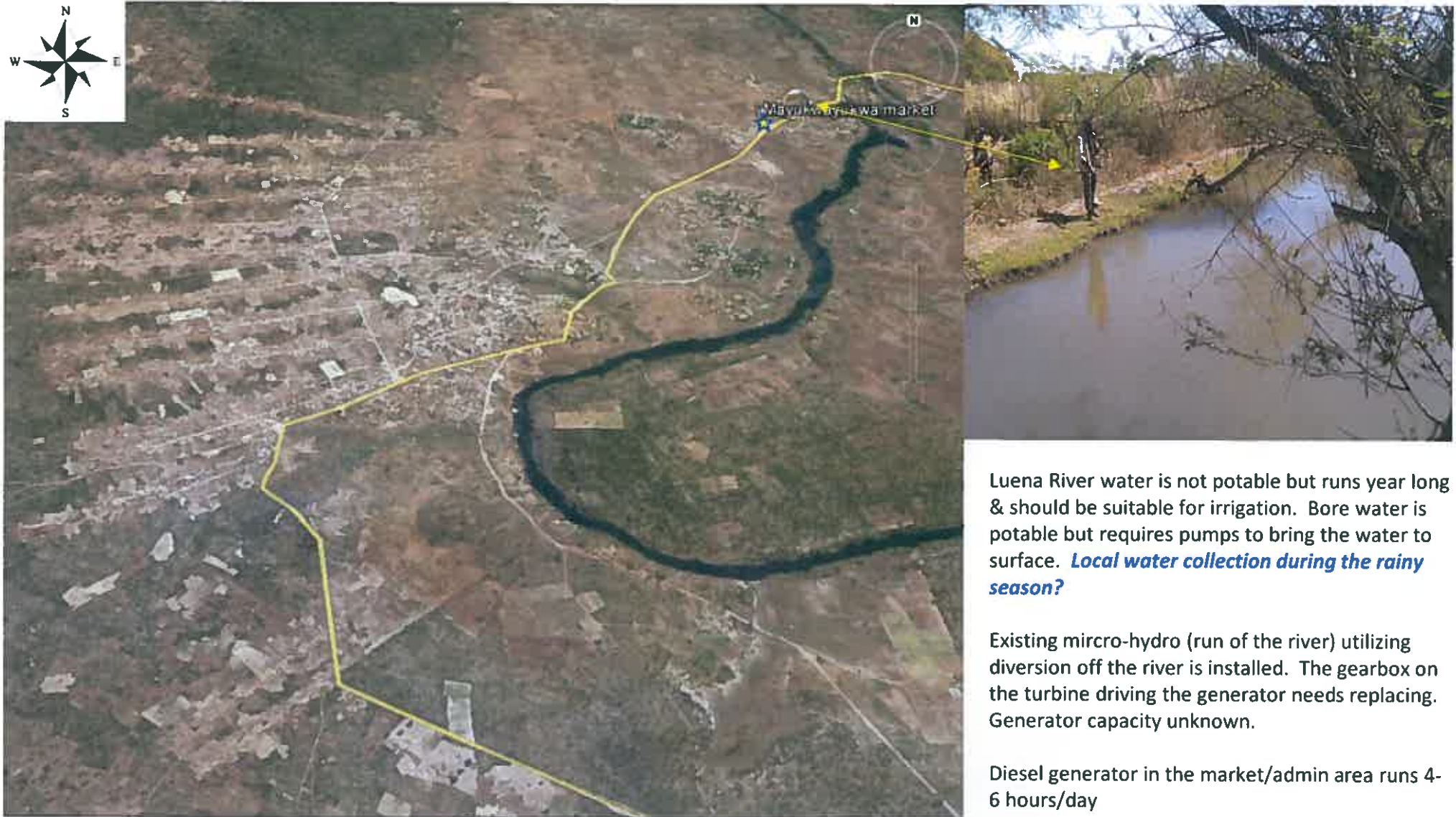


Mayukwayukwa Area [entrance at -14.535565, 24.212138 on Google Earth Pro]

Potable water is a key requirement which creates a relatively low capacity but nevertheless important energy demand to enable a continuous potable water supply from subsurface aquifers at pressures less than the fresh water gradient.



Luena River water is not potable but runs year long & should be suitable for irrigation. Bore water is potable but requires pumps to bring the water to surface. **Local water collection during the rainy season?**

Existing micro-hydro (run of the river) utilizing diversion off the river is installed. The gearbox on the turbine driving the generator needs replacing. Generator capacity unknown.

Diesel generator in the market/admin area runs 4-6 hours/day